

TOOLS / ADHESIVE

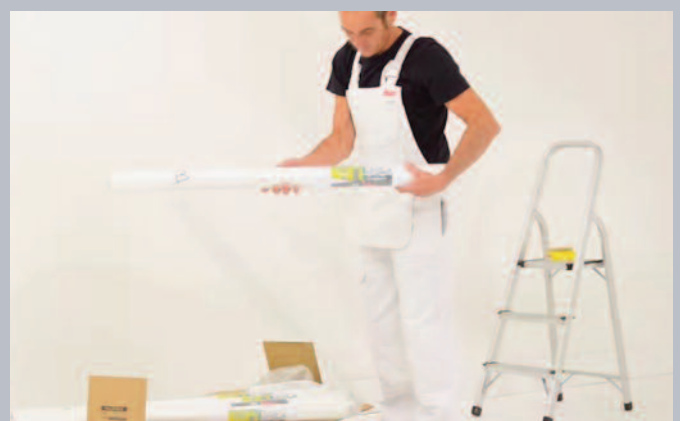


- Tekfix Plus adhesive or Strippable, depending on the substrate (See Surfaces below)
- Tekfix Primer if required
- Sharp bladed snip knife
- Plumb line / spirit level
- Felt roller and/or felt edged spatula
- Masking tape (not essential but useful)
- Plastic seam strips

IN YOUR PACKAGE

Your digitally printed wallcovering has been made to order, so it's worth checking you have everything you need before starting to install.

- A visual is included in your package showing the full wallcovering design, and how the design is split into lengths.
- Each length of wallcovering in the box(es) is individually wrapped and numbered, and can be cross checked against the visual.



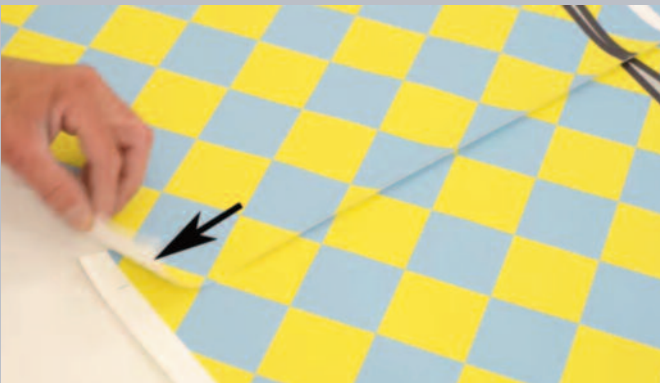
WALLCOVERING CHECK



- Check you have received the correct number of lengths.
- Lay the lengths on the floor before starting, overlapping edges, so you know the image matches.

If you notice any inconsistencies, or have any queries please contact Tektura immediately as we cannot be held responsible once you have started to hang the wallcovering.

Top Tip: Overlap lengths, and match pattern up exactly. Place masking tape across the join to fix position, and gently cut through the tape only, leaving the masking tape on the surface of the two lengths. The tape will help matching up the pattern visually once you are installing onto the wall.



GENERAL PREPARATION

- Brush the area to be covered with a stiff bristle brush to remove all dirt and loose material.
- Remove all old backing paper from the wall surface.
- The surface should be free of any contaminants such as dirt, dust, grease, mildew, ink stains etc. Any of these can prevent adhesion. Wash with a detergent solution, rinse and allow to dry.
- Treat any areas showing mould growth.
- Ensure the hanging surface is sound, smooth, clean, completely dry and of uniform colour.
- Fill cracks and holes with a proprietary filler, smoothed out and allowed to dry.
- Ensure the floors are swept clean to avoid dirt and dust gathering at skirting level.
- Please install with adequate lighting conditions.
- Ensure you have good ventilation in the area in which you're working.
- The site temperature should be 12 degrees C (55 degrees F) minimum.

Top Tip: A dry wall is important for adhesion. A smooth wall ensures any pattern match is maintained. Any imperfections in a wall may result in pattern mismatch.

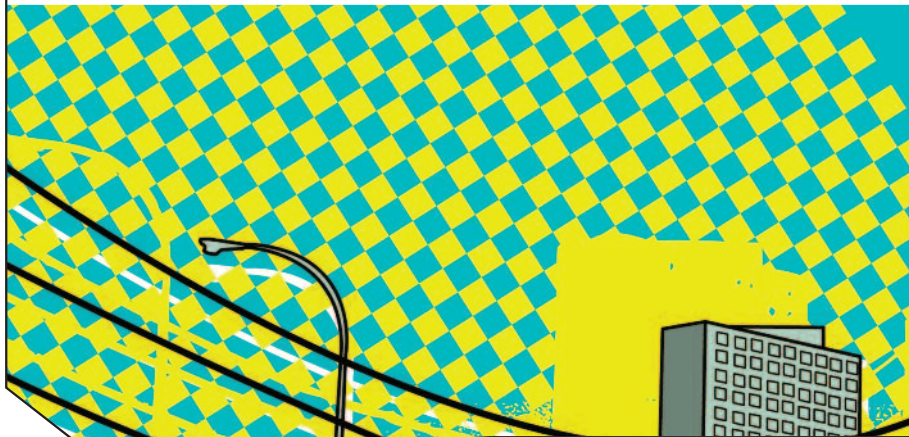
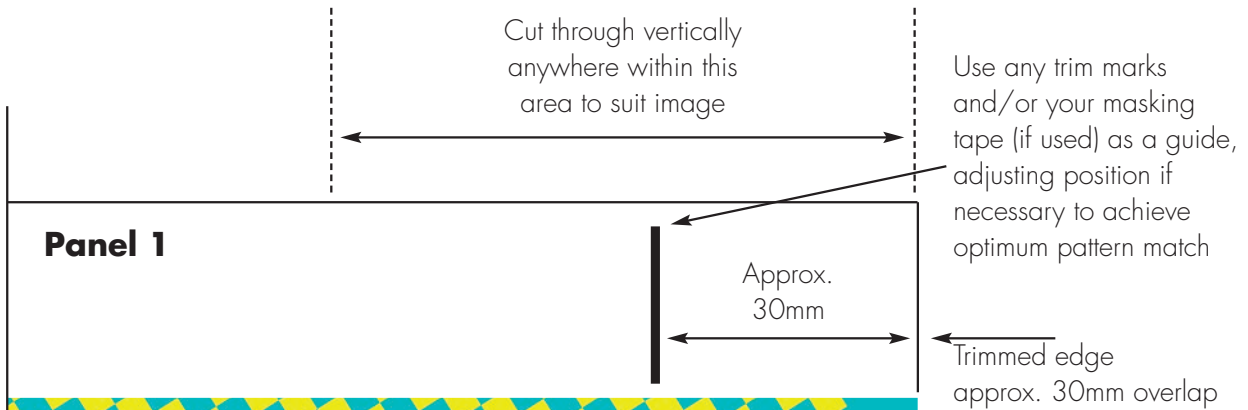
SURFACES

- **Plasterboard:** File all nail heads, screws etc. Coat with light coloured oil-based metal primer. All holes should be filled and smoothed. Prime the surface with Tekfix Primer and allow to dry before hanging. Alternatively, for fabric-backed vinyls only, use Tekfix Strippable adhesive applied directly onto the unprimed plasterboard.
- **Porous Surfaces** (plaster, cement render etc): Ensure the old plaster is stable and free of mould. Ensure new plaster is dry in depth. Seal with Tekfix Primer.
- **Non Porous Surfaces** (glass, gloss paint etc): Abrade the surface to provide a key. Wash and dry thoroughly. Hang wallcoverings using Tekfix VOV Adhesive.
- **Emulsion Paint:** Abrade the surface to provide a good key. Wash and dry thoroughly. Apply one coat of Tekfix Primer.
- **Existing Vinyl:** Ensure the substrate is completely sealed (ie no blown joints, shrinkage etc). Remove all grease, dirt, dust etc - a brush will help loosen dirt from crevices in an emboss. Rinse and allow to dry. Hang wallcoverings using Tekfix VOV Adhesive.

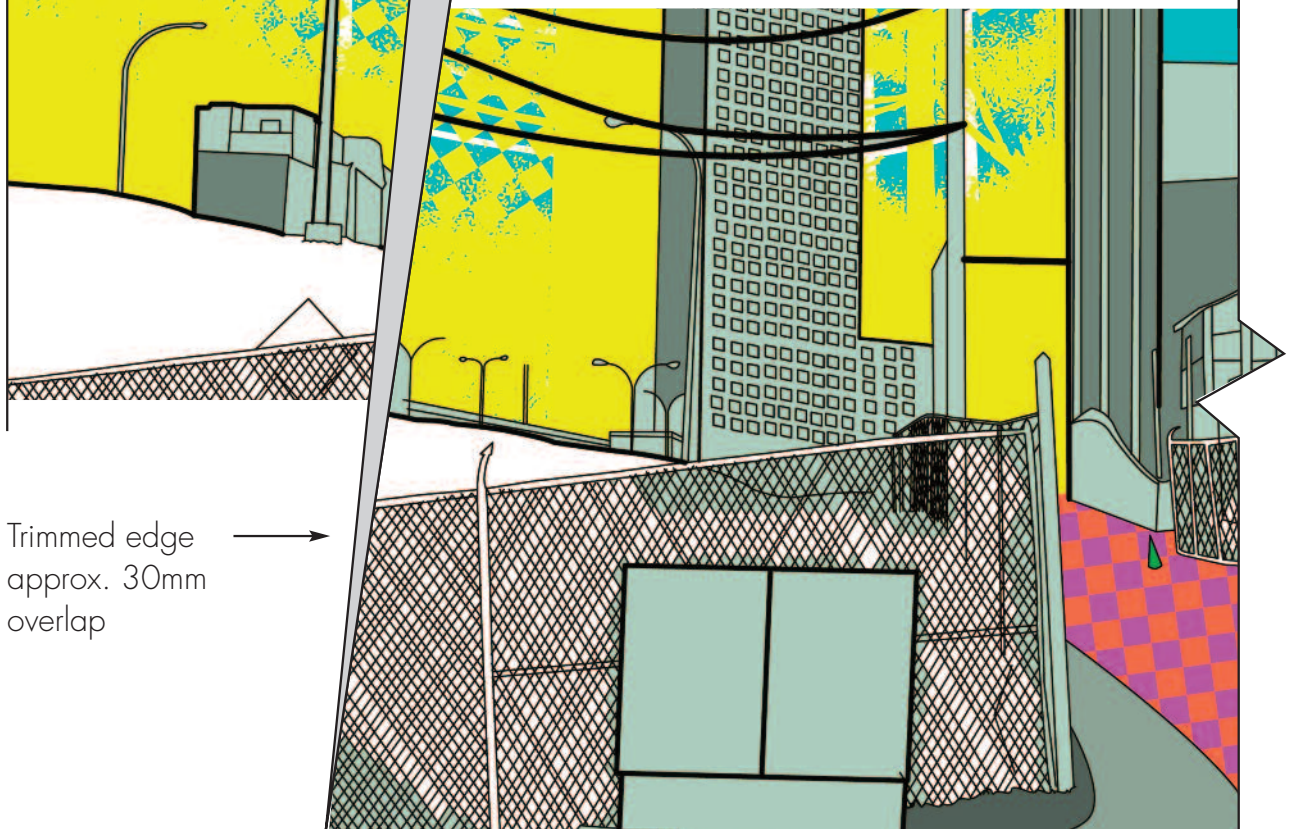
INSTALLATION - FABRIC BACKED VINYL

- Apply the adhesive to the wall. It's a good idea to paste 10cm back from the edge of the paper where you will make the join, and only paste the join when you are ready to paste and fit the next length of wallcovering. This also helps in avoiding getting paste on the surface of the wallcovering.
- Using a plumb line, hang the first length of wallcovering, ensuring the length is positioned correctly (refer to the visual supplied).
- Smooth the wallcovering onto the wall using a felt roller or felt edged covered spatula. An allowance of 50mm top/bottom/outer edge has been given.
- Avoid stretching or pulling the wallcovering. It's better to let the wallcovering fall naturally, then smooth down gently. Avoid overworking, as this may damage the print surface.
- Each length has a 30mm selvedge for double-cutting through.
- Apply the 2nd length of wallcovering, matching up the pattern exactly. (This is where the masking tape comes in handy). Using a plumbline, ensure the drop is hung perpendicular. Varying the position of each length means that once you install the final length, the pattern may have run out and is visually unacceptable.

INSTALLATION - FABRIC BACKED VINYL Continued



Panel 2



Trimmed edge
approx. 30mm
overlap

INSTALLATION - FABRIC BACKED VINYL Continued

- Smooth down as before, ensuring the pattern matches from top to bottom.
- Gently peel back the lengths and apply adhesive to the 'join' area on the wall.
- Place a plastic strip down the exposed length of the wall. This protects the wall area when you are double cutting through the wallcovering (see pic 1).
- Smooth the wallcovering back into position.
- Using a sharp blade, double cut through the wallcovering. Cut perpendicular to the wall surface for a clean join (see pic 2).
- Peel back the edges of the wallcovering, and discard the underlying plastic strip, along with the wallcovering offcuts. Smooth the wallcovering back into position using a felt edged spatula.
- Remove any adhesive seepage immediately by dabbing the area gently with warm water. Dry, and dab again until removed.
- Paste the wall as you go along, lining up the pattern carefully with each drop (see pic 3).



Pic 1



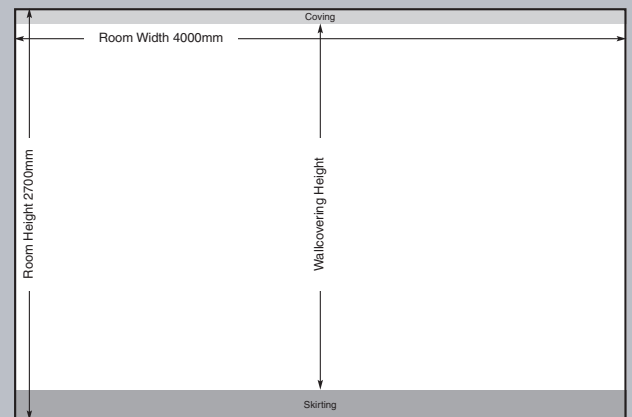
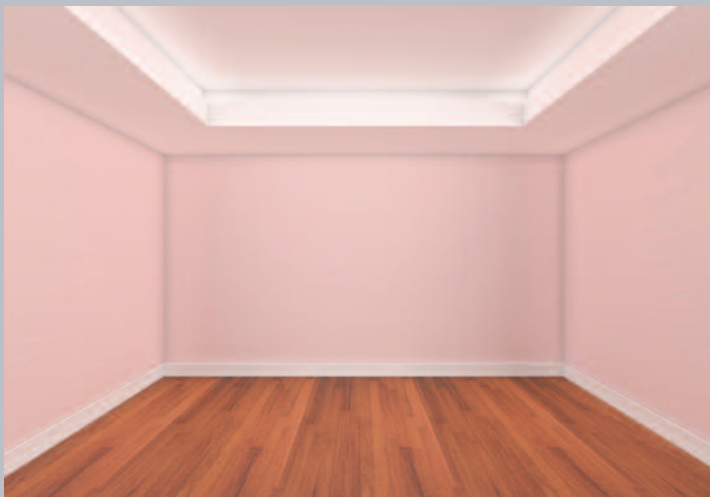
Pic 2



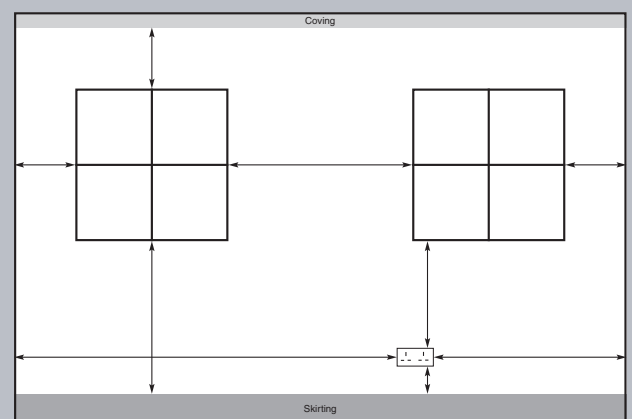
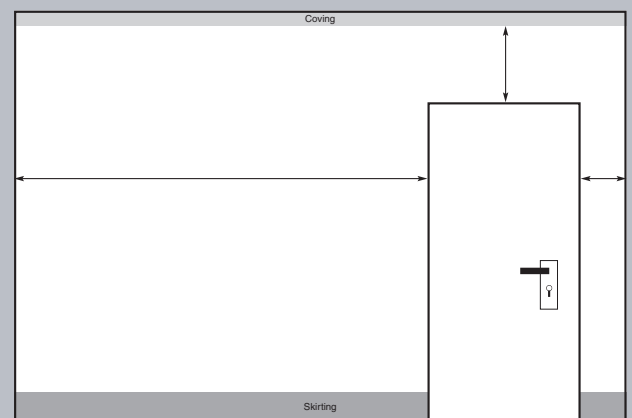
Pic 3

MEASURING UP

- Digitally printed wallcoverings are made to order, and are supplied in pre-cut lengths to fit your wall.
- It's important that we have the correct dimensions before production starts.
- An elevation is ideal for us to work with.
- Only measure the area that will be decorated. Leave out skirting/coving.
- We can also mock up a visual to show how your digital wallcovering will look in the space.
- When measuring your wall, please check if any fixtures or fittings may obscure an important part of your design.



Watch out for fixtures that may obscure the design



ARTWORK

If you are supplying your own artwork, please read our recommendations below for best print results.

Artwork size

- 300-400 dpi at 25% of the finished wall size will provide good results.

Adobe Acrobat PDF

- Save as 'press quality' with all fonts embedded where needed.
- This also applies when artwork has been created using QuarkExpress or InDesign, and then saved as a PDF.

Photoshop, .PSD, JPEG, TIFF

- Flatten your files (no layers), and send in JPEG or TIFF format.
- For JPEGS it's best to save the file at maximum quality to ensure all the detail is retained.
- All files should be save in their original colour format (eg RGB or CMYK)
- JPEGS and TIFFS are smaller files so faster to send than .PSD or TIFF.

Eps, Ai

- Both are acceptable, as well as artwork created using CorelDraw.

Text and logos

- Supply in AI, CorelDraw, InDesign, or QuarkExpress or a similar vector-based programme for best results.

Artwork with imagery AND text/logos

- Please use Illustrator, CorelDraw, InDesign, QuarkExpress or similar to ensure the text/logos retain their sharpness.

Colour

- Always save your files in their original colour format - RGB or CMYK
- But for spot colours, please leave these as they are. Don't convert to RGB or CMYK.

What we do

- We generally increase the final size of the artwork by as much as 50mm on all sides, to allow for trimming in on site. Please ensure that important details are not too near these outer edges.
- Files are upsampled for best quality
- We work out how to tile the artwork into wallcovering lengths.
- We always provide a colour sample for approval before production begins

AND IF YOU'RE LOOKING FOR IDEAS....

Image Libraries

These offer a great source of ideas, but it's good to bear the following in mind:

- What looks good at small scale may pixelate and lose detail when enlarged.
- Choosing a picture that has similar proportions as your wall is best. This helps avoid having to overstretch or overcrop.
- We recommend Shutterstock as these offer good value and choice.

Tektura's own library

- Our own designs are thoroughly tested and can be enlarge to a minimum 3 metres height.
- Many are easily custom coloured and can be adapted or resized to suit your interiors.